



杭州镭速清洗设备有限公司

Hangzhou Leisu Cleaning Equipment Co., Ltd

Address: No.86,HongDa Rd,XiaoShan, HangZhou,ZheJiang,China,311200

Website: <https://www.leisuwashco.com>

Mobile Phone: +8613453132341 (WhatsApp , Skype , Viber , Line , WeChat)

Email: Leisuwashco@gmail.com

Leisuwash LeiYi SG Car Wash Equipment Touchfree Automatic

Revolution of car wash industry, washing clean is king !

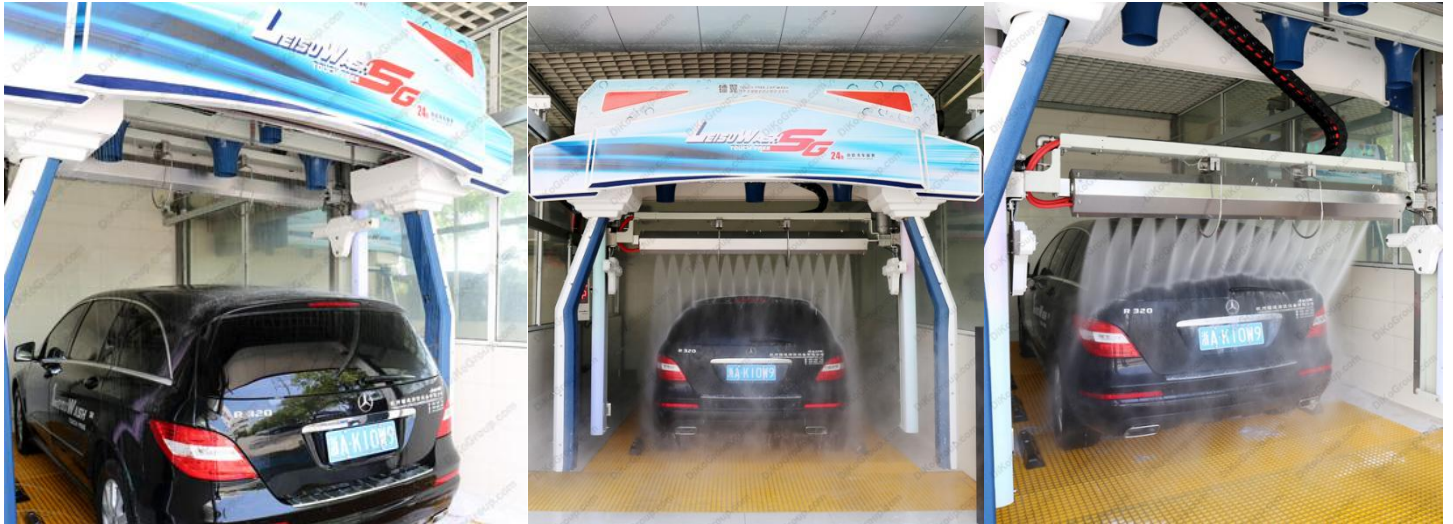


Revolution of The Car Wash Industry, Washing Clean is King!

Leisuwash LeiYi SG rotary high-pressure nozzle can be freely rotated and lifted according to the contour of the vehicle. From the front cover, hood, windshield, car top, rear tail box and rear part of the car, Leisuwash LeiYi SG always maintains a flushing distance of 35CM. Leisuwash LeiYi SG performs 100kg high-pressure flush on the surface of the vehicle body and the attachment such as the body mud is washed away.

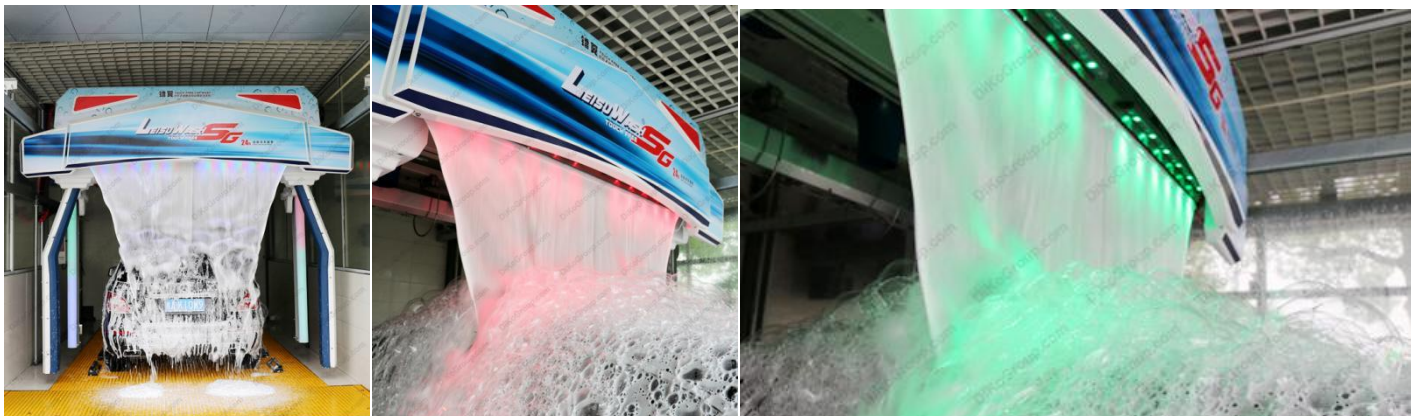
Leisuwash LeiYi SG Subverts the New Pattern of the Car Wash Industry and Opens a New Era of The Smart Car Wash.

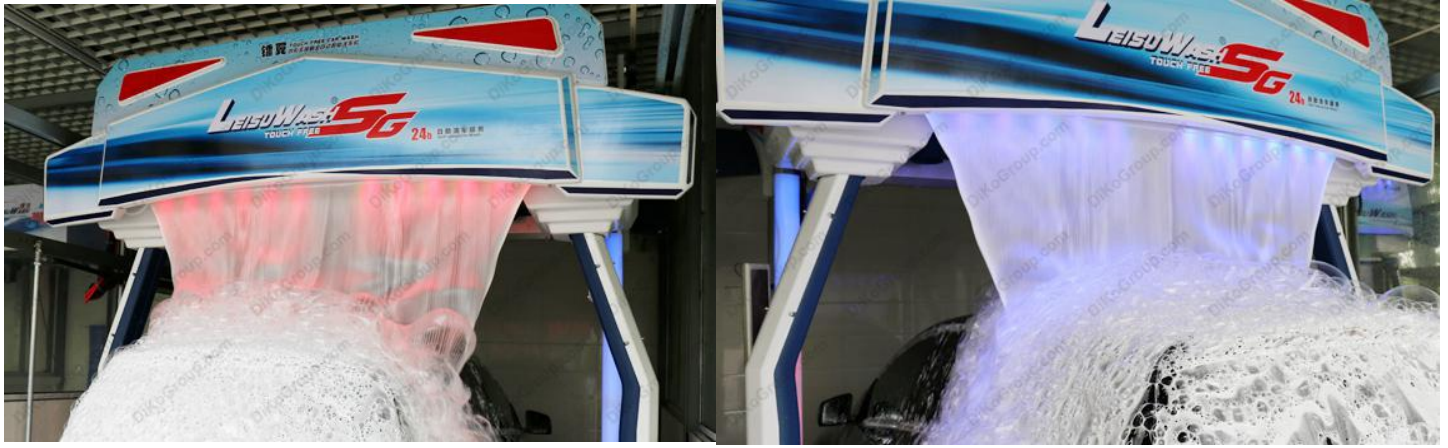
Simulate manual car wash action through the computer program, it can automatically detect and identify all types of vehicles, linearly follow the car body contour, accurately adjust the flushing distance. 35 cm washing distance and contour high-pressure washing can achieve better cleaning effect. Clean and efficient is unparalleled, it is the Leisuwash SG contour touchless intelligent automatic vehicle washing machine.



Leisuwash LeiYi SG Hi-Gloss active agent: Biodegradable, Quickly Decomposes Dirt.

The OverGlow Hi-Gloss system with national invention patents improves the decontamination effect and reduces the manual scrubbing action. At the same time of cleaning, it can also complete the glazing protection effect, making the paint surface more beautiful.





High-pressure Washing With Double Arms and Ultrasonic Ranging on Both Sides can Double Car Washing Speed.

German original imported ultrasonic testing system, the precise washing distance of both arms near the car body is 35 centimeters. American Spray high-pressure nozzle and 100 kg washing pressure make the Leisuwash LeiYi SG achieve the perfect cleaning effect on both sides of the body.



Leisuwash LeiYi SG: RO WATER Reverse Osmosis and Soft Water Coating

Reverse osmosis water can completely absorb the crystal coating wax on the surface of the car body, and it can protect the paint for a long time.



Leisuwash LeiYi SG is Equipped with Embedded Fast Air Drying System.

Leisuwash LeiYi SG equipped the embedded rapid air drying system, 50 seconds fast drying the whole car, leaving no dead ends, including the body gap to achieve a true sense of automatic cleaning.



Leisuwash LeiYi SG can Clean Larger Sizes of Vehicles.

Leisuwash LeiYi SG has been designed with more users needs in mind, and has achieved more cleaning of large size vehicles. The cleaning length can reach 5600mm, width 2950mm and height 2250mm.



Equipment Installation, Transport Size Diagram

Strictly in accordance with European and American standards design and production, excellence, only to do fine, the pursuit of zero-fault product quality objectives.



Technical Parameters and Equipment Configuration Table

Authentic quality, quality assurance, our suppliers are from the world professional companies, reliable technology and quality is your guarantee of trust!



HangzhouLeisu Cleaning Equipment Co., Ltd

www.dikogroup.com

Email: dikogroupco@gmail.com

Phone: +8613453132341 (WhatsApp / WeChat / Viber / Skype)

Item	Parameters/Brand/Consumption
Power Requirement	22Kw
Control System PLC	Siemens Industrial Control PLC (SIEMENS)
Electrical Components	Schneider Schneider, France
Ultrasonic Sensor	Germany B+F (Original Import)
High Pressure Piston Pump	Taiwan WULI (Original Import)
Pump Station Main Motor	Germany SIEMENS Aluminum Shell
Air-Dried Aluminum Shell Motor	Germany SIEMENS Aluminum Shell
High-Pressure Hose	American Parker
Engineering Towline	Germany IGUS (Original Import)
Towline Cable	Germany IGUS (Original Import)
Longitudinal/Transverse Timing Belt	Italy MEGADYNE
Reducer	Italy SIT
Wind Drum/Impeller	304 Stainless Steel (80 db / 40 db)
Rotating Arm	304 Stainless Steel
Lifting Device	304 Stainless Steel
Running Rack	Hot-Dip Galvanizing + Spray Plastic Powder
Installation Frame 160*160*4	Hot-Dip Galvanizing (Finished Assembly) without On-Site Welding
HMI	10 Inch Delta Color Touch Screen
Driving System	Germany (SIEMENS) Variable Frequency Drive
Pneumatic Components	Taiwan, China AirTAC
Nozzle	USA Spraying System (Original Import) 316L Hard Stainless Steel
Rotary Joint	USA (Original Import) 304 Stainless Steel
Maximum Car Wash Size	Length Width and Height 5600*2950*2250mm
Equipment Installation Dimension	Length Width and Height 8900*4000*3300mm
Car Wash Speed	Standard Mode 5 Minutes/Vehicle, Fine Mode 7 Minutes/Vehicle
Water Consumption	Standard Mode 200 L/Vehicle, Fine Mode 350 L/Vehicle
Power Consumption	Standard Mode 1 KWH/Vehicle, Fine Mode 1.3 KWH/Vehicle
Consumption Of Car Washing Fluid	Standard Mode 0.45 USD/Vehicle, Fine Mode 0.52 USD/Vehicle

Leisuwash LeiYi SG Packing List

Specification	Volume / Weight
Main Machine Wooden Box	9.76 m ³
Pump Station Wooden Box	0.73 m ³
Mixing System Wooden Box	0.7 m ³
Console Box	0.4 m ³
Mounting Frame	2.15 m ³ (12 pieces)
Running Rail	520 KG (2 pieces)
Accessories	Galvanized Pipes and Other Accessories
Total Equipment Volume	13.8 m ³
Total Transport Weight	3500 KG

Leisuwash LeiYi SG Configuration

24-Hour Unattended	Any Car Wash Mode Selection
Rise-Down High Pressure Flushing	Fault Self-Test Function
High Pressure Flushing For Side Ranging	Touch Screen Operation
Chemicals Automatic Proportioning System	Remote Control Operation
Water Wax Glazing System	Operation Authority Setting
Embedded Mobile Air Drying System	Auto Standby Function
Voice Guidance System	Emergency Stop Function
LED Prompt System	Panel Light
Self-Parking System	Lifting Light
Digital Safety Collision Avoidance System	System Lifetime Free Upgrade Service
Car Wash Statistics	OverGlow Hi-Gloss Glazing
Installation Frames for Indoor and Outdoor	R0 WATER Reverse Osmosis Soft Water

Keep Improving, Only Do Fine Products, and Pursue Product Quality Objectives with Zero-Fault.

Leisuwash LeiYi SG consists of more than 2,000 components, each of which has a service life of more than three years, even a small screw is 304 stainless steel. Only one such car wash machine can be durable, and Leisuwash provides a warranty for three years! Customers will be assured and feel at ease! Eliminate worries during use.

Germany Imported Siemens Full Aluminum Motor



The main power motor and the air-drying system motor all adopt the imported aluminum shell motor from Siemens Germany, which has lower energy consumption and longer service life.

Taiwan Imported WULI Water Pump



Stainless steel pump head, aluminum alloy crankcase, German imported sealing ring, more than ten years of service life.

German IGUS Cable and Engineering Towline



Imported by IGUS, Germany, CE, UL and ROHS certification, 60 years of global cable and engineering towline system experts.

Germany P+F Ultrasonic Testing System



Germany imported advanced ultrasonic sensors to precisely position and shape the vehicle.

American Parker High-Pressure Hose



Pressure 3125 PSI, super wear-resistant, bending more than 300,000 times.

Leisuwash LeiYi SG Multifunctional Walking Frame System



Laser cutting and bending are used to design and produce the running frame of the Leisuwash LeiYi SG series. The Leisuwash LeiYi SG is assembled with screw without any welding place, which completely avoids the potential safety hazards such as leak welding and virtual welding during the welding process. And

according to the strength requirements of each component, the material can be selected and designed to make the overall frame structure of the car washing equipment more compact and reasonable, and the operation of the equipment more smooth and safe.

Installation Frame, Overall Hot Galvanized, National Standard Steel



The frame profile is designed and manufactured by the national standard 140*140*4 square tube. The surface is hot-dip galvanized, the finished product is assembled, the screws are all 8.8 grades, no on-site welding is required, and the service life is more than ten years.

Custom Track Steel 120*120*8



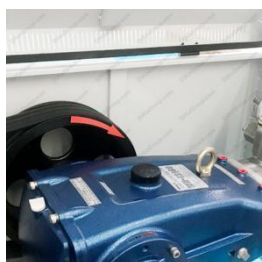
8MM thickness, higher strength, hot-dip galvanizing treatment, more safe and reliable, durable.

304 Stainless Steel Double-side Spray Rod and Lifting Device



Full 304 stainless steel double-side spray rod ensures that pipes and lifting devices are not rusty.

High-pressure Pump Box, Exquisite Workmanship



Galvanized sheet + plastic powder manufacturing process, hollow box cover design helps the motor to dissipate heat and extend the service life. It is equipped with 304 stainless steel fastener and hydraulic power push rod for more convenient and quick maintenance.

Leisuwash SG Demonstration Video

https://youtu.be/stF_1yZu0J0

https://youtu.be/mQfX6RaS_vs

<https://youtu.be/VIsV14M4O-g>